



**In the Internet of Everything,
Lierda serves the world**

Lierda Science & Technology Group Co.,Ltd.



Contents

01

Overview of Lierda

02

Electronic Components Distribution

03

IoT Module

04

IoT Module Success Case

05

EMS Electrics Manufacturing Services

01

Overview of Lierda



Lierda Science & Technology Group Co.,Ltd.

Lierda
利 尔 达

Brand Positioning:

In the Internet of Everything, Lierda serves the world

What do we do?

We provide one-stop service including IoT product development, technology application and service implementation

Headquartered in Hangzhou, China, Lierda Technology Group Co., Ltd. (Stock Code: 832149) officially listed on the Beijing Stock Exchange in 2023.

Established for more than 20 years, Lierda provide products for the whole the wireless field, and offer customers with complete solutions in online platforms, industrial application and terminals, making "Internet of Everything" come easier!



Headquarters: Hangzhou
Lierda Internet of Things Technology Park

■ Achievement

Founded more than **20 years** ago,
Lierda has been deeply engaged in the IoT industry.
Our solutions cover all fields, continuing to help traditional
industries to upgrade intelligently.

LoRa Module

No.1

Global Shipments

NB-IoT Module

Top3

Global Shipments

Cellular Module

Top5

Global Shipments

IoT Module

250⁺
Million pcs

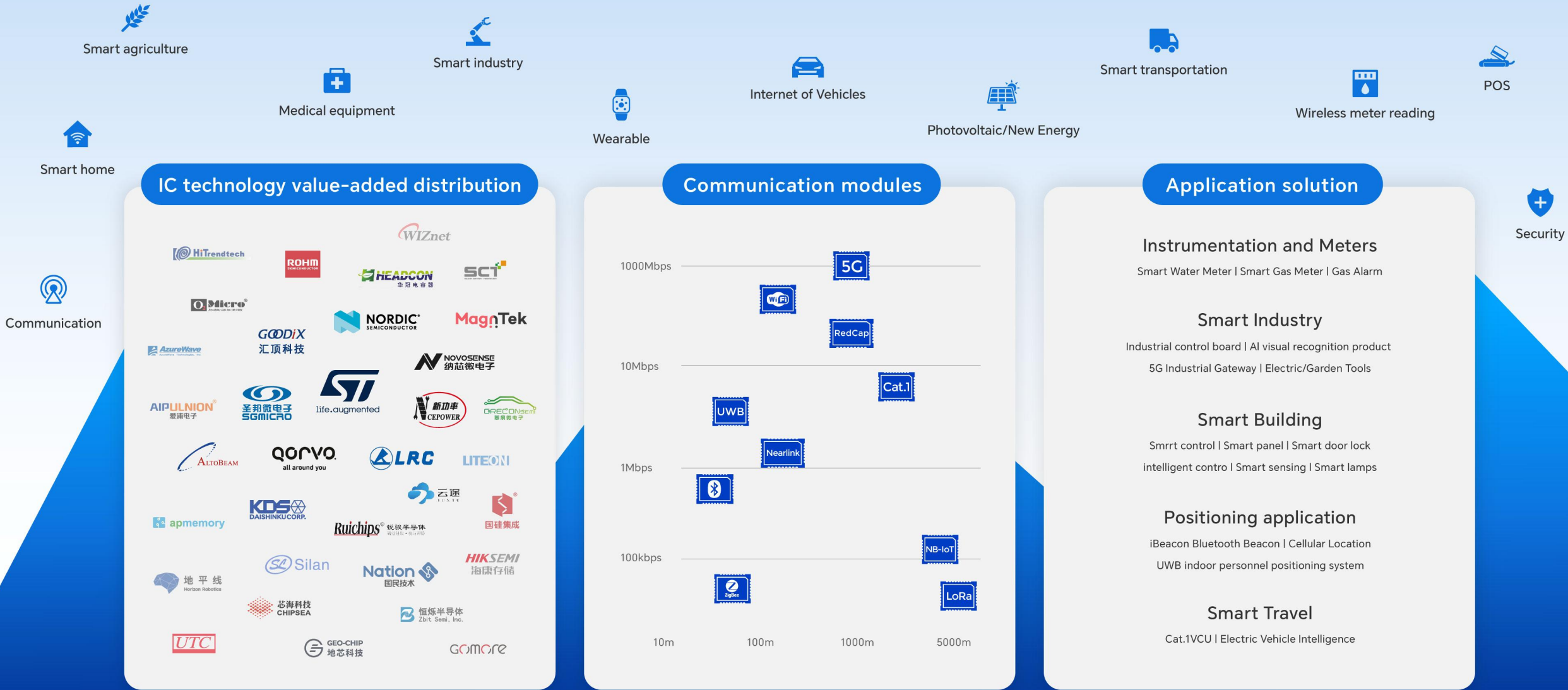
Cumulative Shipments

MCU

2.3⁺
Billion pcs

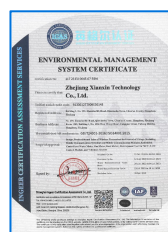
Cumulative Shipments

Lierda Product Map



Manufacturing Capability

Lierda



Manufacturing Capacity

9.56 million

The maximum monthly capacity of components > 956 million

0.35mm

Minimum pin pitch of Chips
Reaching 0.35mm

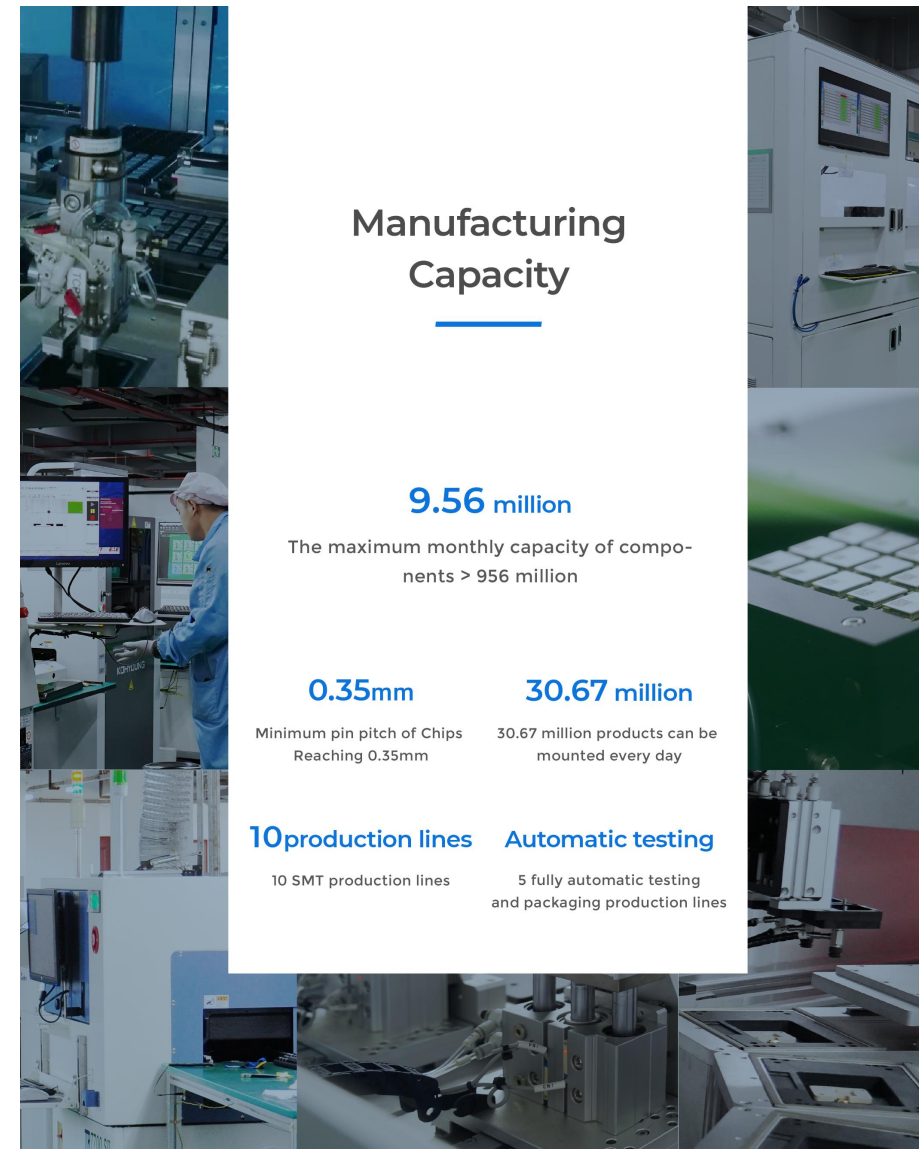
30.67 million

30.67 million products can be
mounted every day

10 production lines Automatic testing

10 SMT production lines

5 fully automatic testing
and packaging production lines



02

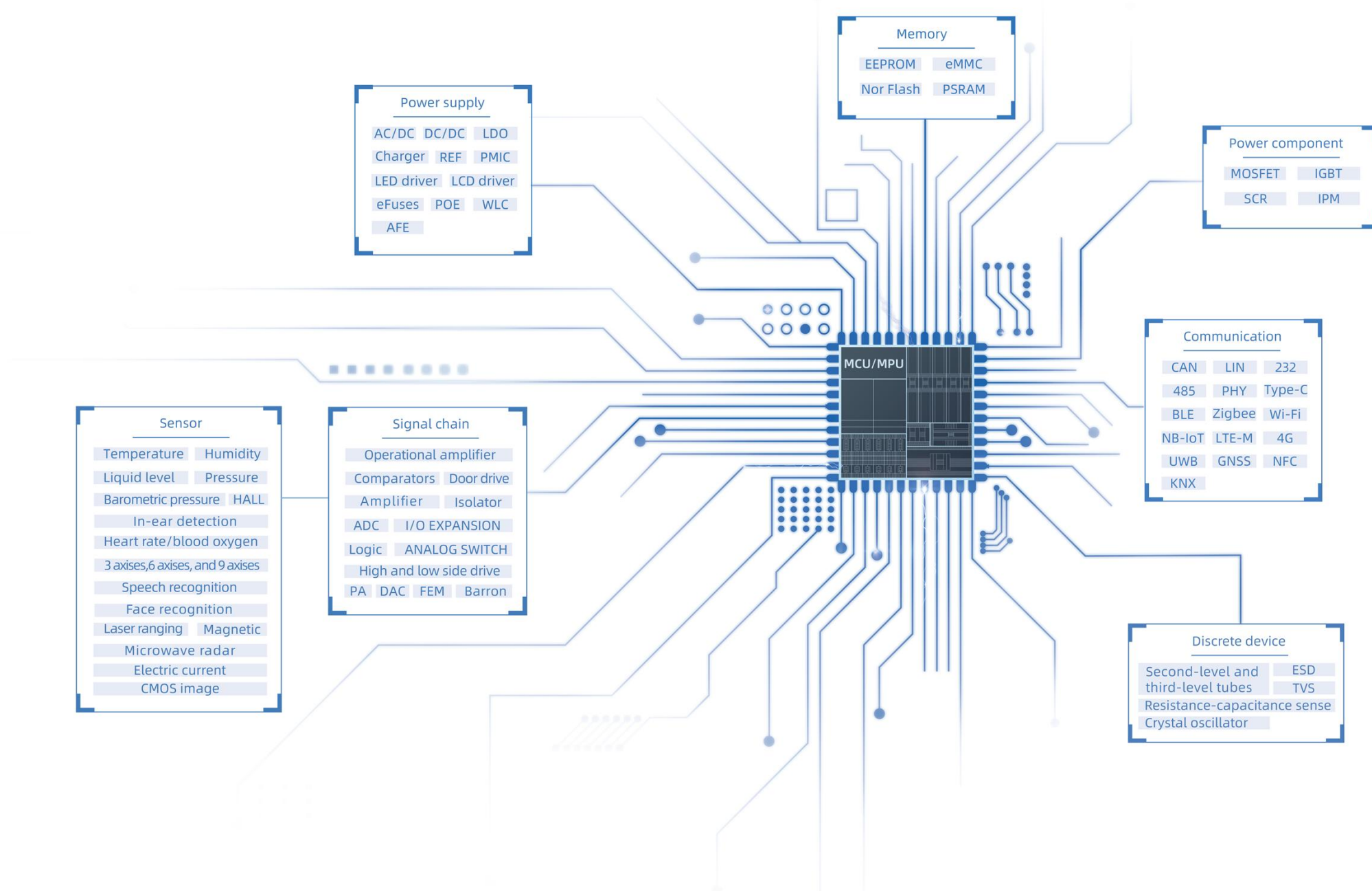
Electronic Components Distribution



Authorized Distributor Brands



In the Internet of Everything
Lierda serves the world



03

IoT Module



5G eMBB Module



M.2



LGA



High Speed
UL 1Gbps
DL 2Gbps



OpenWRT
Flexible
development



Rich Interface
USB, PCM, I2S, I2C,
UART, B_CODE...



3GPP R16
Compliant with all
R16 features

5G Redcap Module



M.2



Mini PCIe



LGA+LCC



High Speed
UL 120Mbps
DL 226Mbps



OpenWRT
Flexible
development



3GPP R17
Compliant with all
R17 features



Low Cost
Low power consumption
and low cost

5G eMBB Module

NE16U and NE26U series is 5G eMBB module, supporting 5G SA/NSA and compatible with LTE/WCDMA. NE16U features 3GPP Rel.16 capabilities like 5G LAN, network slicing, 99.99% reliability, ms-level latency, and 1μs-precise timing.

5G Redcap Module

NR90 series is a 5G RedCap module. Leveraging 3GPP Rel.17, it supports 5G SA mode and is 4G-compatible. With peak speeds of 226Mbps (DL) and 120Mbps (UL), it exceeds Cat.4 modules for mid-high speed needs. It enables 5G LAN, precision timing, network slicing, low-power high-accuracy positioning, uRLLC, SUL, and other 5G features.

Application Scenarios



CPE



Mi-Fi



Powerbank with Mi-Fi



UFI



Gateway



4G LTE Cat.1 bis
UL 5Mbps
DL 10Mbps



Protocol
Build-in multiple
network protocols



Fast Attach
2~3 seconds
access to the nwk



Low Power
low power consumption
sleeping current 3.5 uA



WiFi Scan
WiFi Scan for
Location Aiding



FOTA
Firmware upgrade
over the air



AT
AT Command via
UART and USB



Open Cpu
Open Cpu SDK
for developer



Codec
Intergrated audio codec
NT35F only

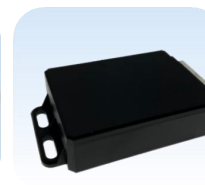
■ Cat.1

NT26 and NT35 Cat.1 bis Series module supports 3GPP Rel.14 and FDD/TDD-LTE standards. Featuring compact size, fast network access, and ultra-low power consumption, it integrates rich network protocols and multiple industry-standard interfaces, with support for diverse drivers and software functions to expand M2M applications.

■ Application Scenarios



IPC



E-bike VCU



SOS



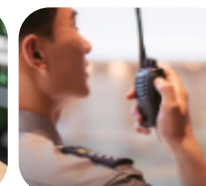
Tracker



E-Meter



POS



POC



Sharing



Charging



Low Power
3uA@PSM, 3.6V



Wide Voltage
2.2~4.2V



FOTA
Firmware upgrade



BLE 5.0
Support BLE 5.0



Low Power
1.5uA@PSM, 3.6V



Wide Voltage
2.2~4.5V



FOTA
Firmware upgrade

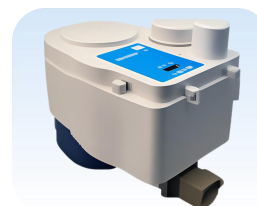


Low Cost
Extreme low cost

NB-IoT

The Lierda NB-IoT module supports 3GPP standards and bands 2, 3, 5, 8, 20, 28. With a compact design, low power consumption, long-range transmission, and strong anti-interference, it enables easy, flexible product development for applications.

Application Scenarios



Water Meter



Gas Meter



Smoke Detector



Smart Parking



Industrial Equipment



Gateway
OG45



Node
WB26



High-Performance
Adopts NXP A53
quad-core CPU and
Semtech SX1302 chip



Built-in Network Server
Pure intranet transmission
supports MQTT/HTTP
data forwarding and API call



Industrial-grade Design
IP67 waterproof and dustproof
Wide temperature and voltage
High protection level



Alliance Public Standard
Complies with LoRaWAN
Specification 1.0.4
Class A/C standard



Low Power Consumption
Standby current < 2uA



Seamless Network Roaming
Real-time switching
between multiple gateways



Multiple Access
Supports Ethernet,
4G, Wi-Fi, etc.
Multiple communication
methods



Power Failure Alarm
Abnormal alarm
through email or SMS



Quick Installation and Deployment
Support wall-mounted
installation and
pole-mounted installation



Dynamic Path Optimization
Centralized management
in the cloud real-time path
optimization



Star Topology
Reduce latency and
improve network
stability



Long Range
Coverage radius up to
3 km to 7 km

Application Scenarios



Water Meter



Gas Meter



Robot Lawn Mower



Solar



Smart Building



Street Light



Agriculture



Indoor Personnel Positioning



Lowcost
M/S 1 conections



Master-Slave
8 conections



Wide Temp.
-40~105℃, Slave Only



Long Range
Mater-Slave



Nodicon

Based on the Nodicon platform



Applications

Support Various applications



Rich packaging

Rich packaging demensions



Low Power

low power consumption



Long Range

Long communication range



FOTA

Firmware upgrade



Wide Temp.

Wide temperature range

BLE

Lierda provides Bluetooth modules and solutions that meet Bluetooth LE and SIG Mesh standards. The products fall into four main series: E, S, T, and K. In each series, both hardware and software are highly compatible, which helps customers' products quickly achieve Bluetooth functions.

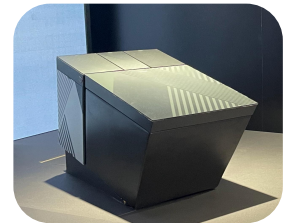
Application Scenarios



E-Bike



E-MotorBike



Toilet



Industrial Equipment



Meter

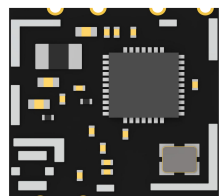


Matter Applications

UB6L



USB



USB



SDIO



UART



High Speed Wi-Fi 6



Support BLE



Fully Certified



Mainstream Packaging



Rich Interfaces



2.4G/5.8G
UB64 only

■ Wi-Fi

The Wi-Fi product line includes stand Wi-Fi Module, IoT Wi-Fi module and Wi-Fi solution. With excellent RF and complete certifications, the standard suits mainstream OS like Linux, Android, Windows, and is widely applied in IPC and TV. The IoT version, featuring flexible dev via transmittance and OPEN MCU, provides cost-effective solutions.

■ Application Scenarios



IPC



Video Doorbell



Robo-vac



Appliance



Car DVR



USB
with Wi-Fi



SDIO
with Wi-Fi



UART
with BLE



Polar Codes
anti-interference



Long Range



Low Latency



High Speed



Compatible Packaging



Low Power Consumption

NearLink

NearLink is a new generation of short-range wireless connectivity technology brand native to China. NearLink features characteristics such as low latency, low power consumption and strong anti-interference ability. Lierda, a front-runner in China for SparkLink modules and solutions. Its excellent RF capabilities and full-fledged certifications allow it to meet various application demands.

Application Scenarios



IPC



Drone



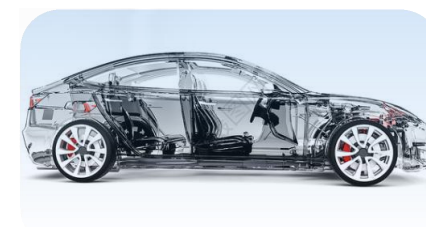
Router



PC Components



HiFi Audio



NearLink to CAN



- High Performance
A35+M33
- Maximum Frequency
1.5 GHz + 400MHz
- Rich Resources
- 1.35 TOPS NPU
- Integrated GPU
900MHz
- 3-Channel CAN FD
- 3 Gigabit Ethernet
- Dual Screen Display

- High Performance
STM32MP135
- Maximum Frequency
Up to 1 GHz
- Rich Resources
- Advanced Security
- High Resolution
1920x1080
- 2-Channel CAN FD
- Dual Gigabit Ethernet
- Industrial Design

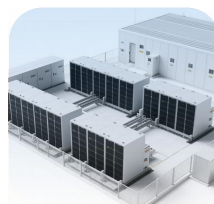
Application Scenarios



EV Charger



Photovoltaic Inverter



Energy Storage System
(ESS)



Gateway



Industrial Control HMI



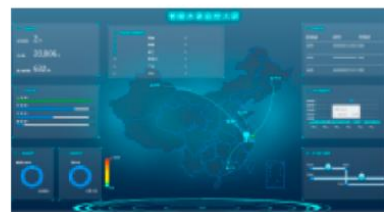
Medical Equipment HMI

04

IoT Module Success Case



Platform



Cloud Server



Base Station



4G Base Station



NB - IoT Base Station



LoRaWAN Gateway

Communication

4G LTE

NB-IoT

LoRaWAN

Terminal



Cat.1 E-Meter Dongle



Cat.1 Gas Meter



NB-IoT Water Meter



NB-IoT Gas Meter



LoRaWAN Water Meter



LoRaWAN Gas Meter

Water-Meter

Gas-Meter

E-Meter

WB26
NB860
NT26F

WB26
NB86
NT26F

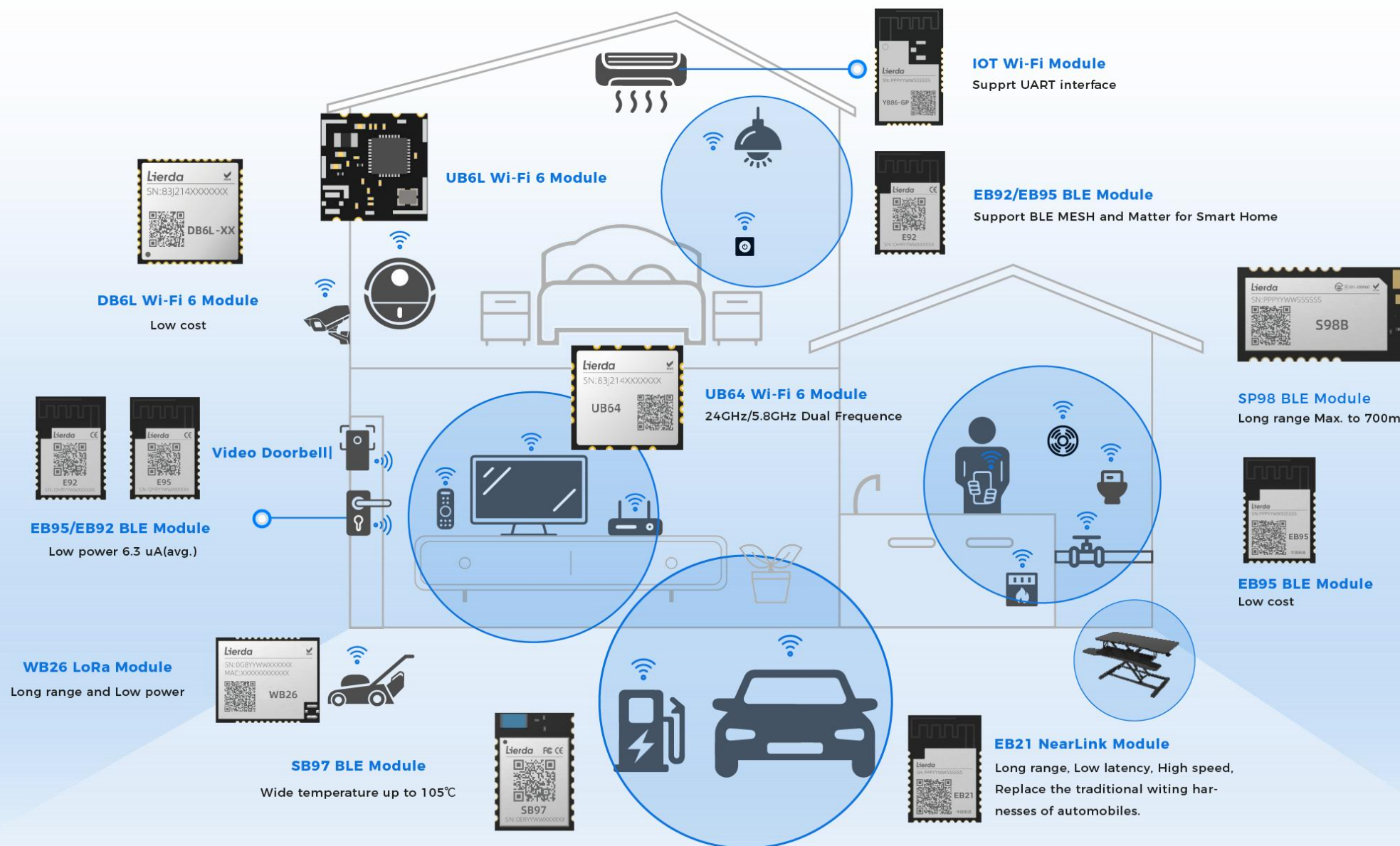
NT26F

China,
India,
Africa,
Southeast Asia,
South America

China,
Australia

South
Korea







NT26 Serial Cat.1
Module



China & Southeast Asia



LoRaWAN Street Light

Lierda

NETWORK SERVER

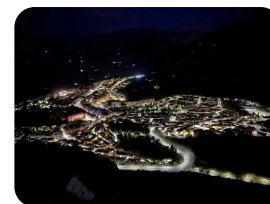


Unicore3.0 NS

GATEWAY



TERMINAL EQUIPMENT



SPAIN



GREECE



SAUDI ARABIA

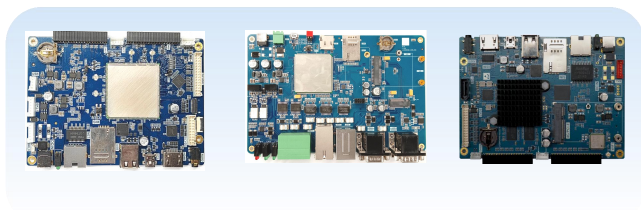


MALAYSIA



THAILAND

Industrial Control Mainboard



IC530
IC610

Smart Factory &
Smart Warehouse in China

Gateway



5G eMBB NE16U
5G Redcap NR90

Smart Factory &
Smart Warehouse in China

Vacuum Pump



BLE: SB97

North America

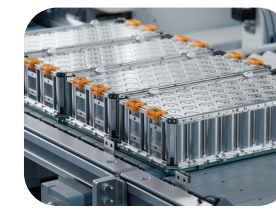
Industrial Lubrication Oil Pump



NB-IoT: NB860
Cat.1: NT26F

China & Asia

BMS



BLE: SB97

Europe



POS

Cat.1 NT26F, NT26K

10 million
pcs/year

China,
Southeast Asia



IPC

Wi-Fi DB6L
Cat.1 NT26F, NT26K

5 million
pcs/year

China,
Southeast Asia



Tracker

Cat.1 NT26F, NT26K

200 k
pcs/year

Asia,
Europe



Robot-Vac

Wi-Fi DB6L

500 k
pcs/year

China,
Southeast Asia



Robot Lawn Mower

Wi-Fi DB6L

100 k
pcs/year

China,
Southeast Asia

05

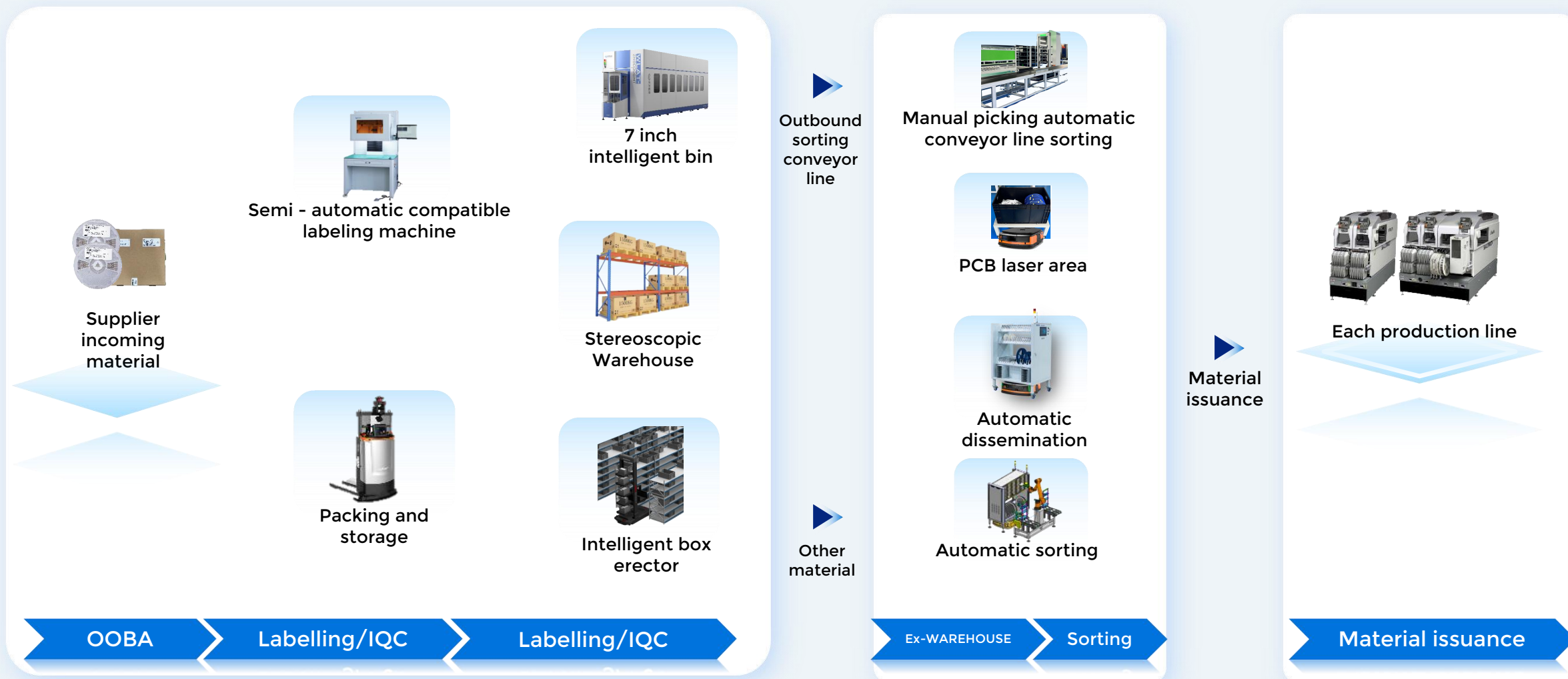
EMS

Electronics Manufacturing Services

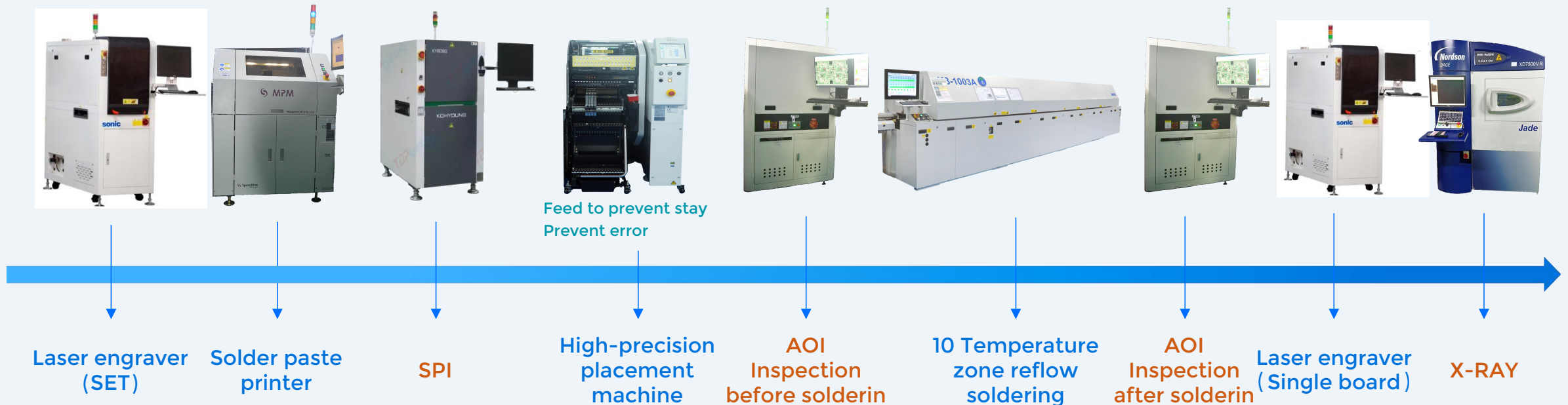


WMS system

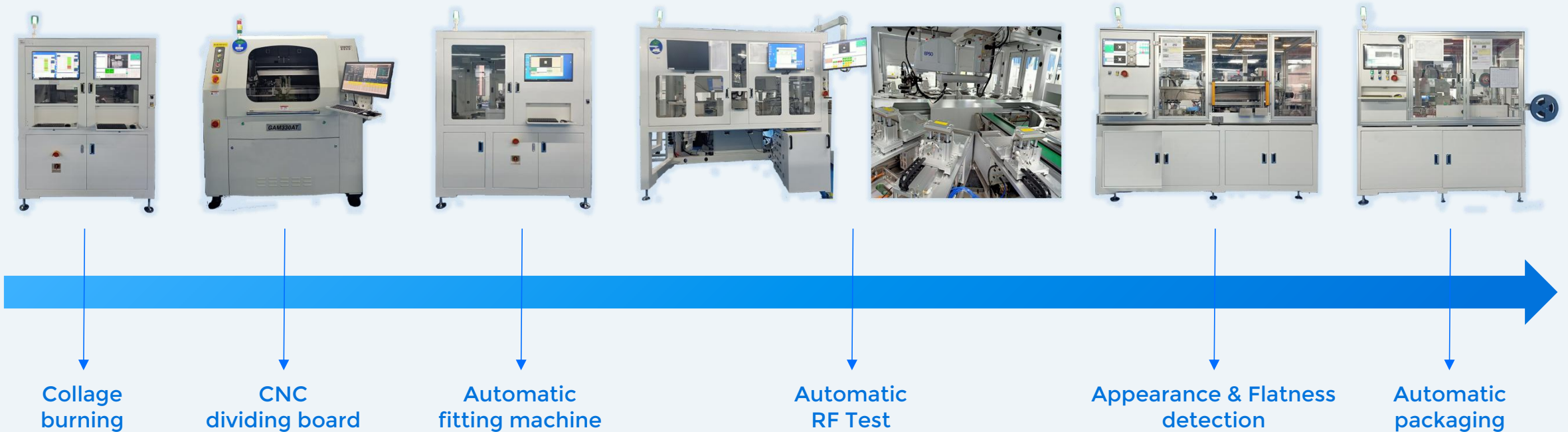
Intelligent storage, Automatic ingredients, FIFO, Automatic distribution

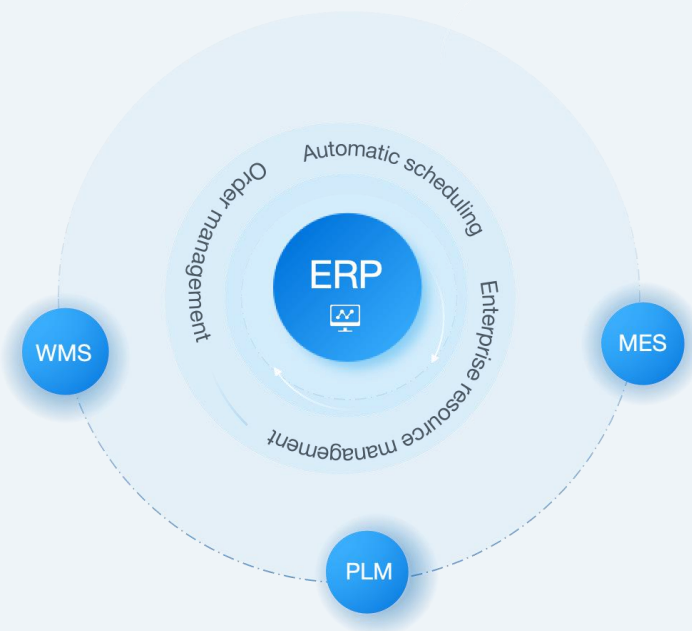


SMT Equipment	SMT lines 10 Each line is paired with SPI & AOI	SMT mounting capability Minitype: 01005 High precision: 0.35mm BGA Large size: 90-120 mm material	MES Data acquisition, Process control, Material anti-freeze
SMT patch welding straight rate 99.8% Pass rate 99.9%	CPK 1.8-2.0		
Mounting Rate—Materials 100k+ (Line/hour), Total Material 4.8 billion pcs/year; Cellular Module: 50 million pcs/year			



Automatic	Automatic production lines 7 Daily output of modules 100k+	MES Process control, The test data is saved in real time	The test efficiency is improved by 3 times Pass rate enhancement 2%	Automation VS Manual
-----------	---	--	--	-------------------------





Constant Temperature Shielded Room

With **12** completely isolated wireless signal of the constant temperature shielding room, the maximum removal of external interference on the product test, so that the product test value is real and effective.



N9000A
Spectrum Analyzer



E4438C
Vector Signal Generator



CBT 32
Bluetooth Tester



WT-200&WT-160
Wireless Network Tester



Multi-DUT
wireless tester

WMS Warehouse Management System

MES Manufacturing Execution System

PLM Product Lifecycle Management

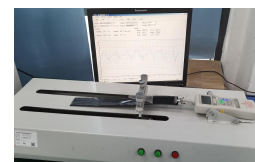
QC Test Equipments



High precision
LCR tester



Solderability test
tin furnace



Strip stripping
tension tester



RoHS test
instrument



First article
inspection



Secondary
image projector



Nano spraying
equipment

MAJOR PARTNER

AUX



ACON



CONTEC



GOODIX

Goertek

GOODWE



Hisense

HIKVISION



inmotion



KOHLER



NOVOSENSE

oppo



SUNGROW



Tanda



VALUE



yuwell

ZENNER

ZWEELEC

Lierda

Lierda Science &
Technology Group Co.,Ltd.

THANK
YOU